

....
Power your **Career in Finance**
with data-driven **Analytical Skills**

PG Certification Programme in
FINANCIAL
ANALYTICS

BATCH 02

11 Months

Live Online

Weekend Programme

Data-driven finance is booming!

70% of finance firms are increasing their investment in analytics

Finance Trends 2026 | Deloitte



In this data-driven world, the success of businesses depends on their ability to analyze data and convert that into useful and timely information - more so for investment management companies while making investment decisions.

\$ **62.5** bn

Indian Analytics Market Size
in 2023

\$ **182** bn

Expected Market Size
by 2028

Financial Analysts, who adopt statistical approaches to evaluating a financial instrument, a business, a sector, or the market as a whole, and forecasting future performance, are in high demand!



PG Certification Programme in **FINANCIAL ANALYTICS**

11 Months | Live Online | Weekend

Jointly offered by **NSE Academy** and
Anna University

Build in-demand **analytical skills** for investment banking, mutual funds, stock broking, fintech, insurance, risk management, and more. Apply R, Python, Power BI, and Tableau to solve real financial use-cases.



Future-ready Modules

covering core financial analytics concepts and evolving technology disruptions



Analytics & BI Tools

Apply R, Python, PowerBI, and Tableau for analysis and visualization



Capstone Project

with mentorship from industry practitioners



Joint Certificate

from Anna University &
NSE Academy



MESSAGE FROM THE **HEAD**

Department of Management Studies
Anna University



The PG Certification Programme in Financial Analytics offered by Anna University in association with NSE Academy is your first step towards an illustrative career in rapidly evolving finance and fintech sectors. Our cutting-edge curriculum, and combined expertise of academic excellence and industry connections will help you hone futuristic new-age competencies to turbocharge your career in financial analytics.

Dr. A. Thiruchelvi

Professor & Head
Department of Management Studies
Anna University, Chennai





PROGRAMME **STRUCTURE**



11 Months
starting March 2026



10 Modules
including Capstone Project



Live Online
Sessions



Weekend Sessions
Saturdays & Sundays



Interactive
learning



Hands-on Activities
in each module

PROGRAMME **MODULES**

TERM I

- Financial Econometrics
- Financial Statement Analysis
- Essentials for Financial Analytics

TERM II

- Time Series Analysis & Forecasting
- Technical Analysis
- R & Python for Financial Analytics

TERM III

- Power BI & Tableau for Data Visualization
- Machine Learning in Finance
- Big Data Analytics in Finance



Hands-on Activities
in each module



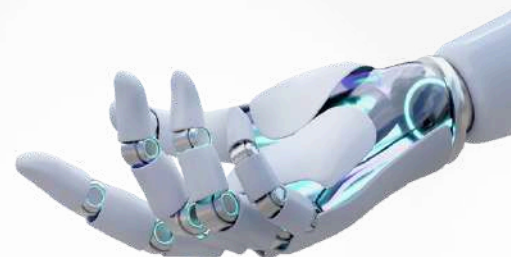


CAPSTONE & ACTIVITIES

(Indicative List)

- Financial Statement Analysis of Listed Companies
- Market Performance Metrics for Global Indices
- Correlation Analysis of NIFTY50 Stocks
- Regression Analysis of Inflation and Interest Rates
- Time Series Trends in Crude Oil Prices
- Testing the CAPM Model on Indian Equity Returns
- Risk Modeling in Indian Mutual Funds
- Volatility Modeling of NIFTY50
- GARCH Application for Global Commodities
- Algorithmic Trading Models in US Markets

TOOLS & PLATFORMS



ASSESSMENTS

End-of-Module Assessments

Online 25 marks

Assignments | Quizzes

End-of-Program Assessment

Online 75 marks

Capstone Project

....

PROGRAMME **FACULTY**

Learn from

INDUSTRY PRACTITIONERS

from NSE Academy, and

SEASONED ACADEMICIANS

from Anna University

with rich experience in

financial markets and analytics



CREDENTIAL

Successful participants will receive a **PG Certification in Financial Analytics** jointly from Anna University and NSE Academy.



Sample of Certificate of Completion

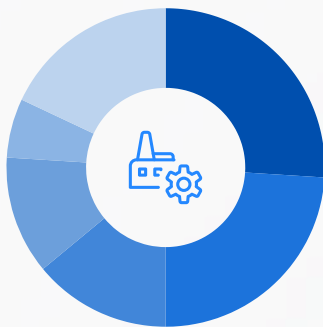
IDEAL FOR

Professionals in Banking, Financial Services, and Insurance (BFSI) Companies | FinTech Professionals | IT/ITES Professionals working in Finance Domain | Risk Management Professionals | Treasury Management Professionals | Investment Management Professionals | CFOs and Finance Professionals | Entrepreneurs & more

BATCH 1 COLLECTIVE PROFILE

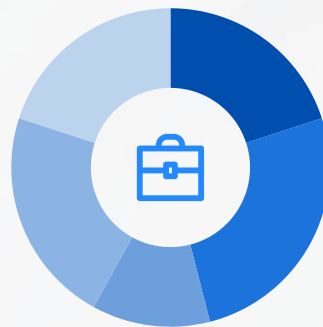
Batch 1 had participants from **diverse academic and professional backgrounds**, contributing rich perspectives to collaborative learning.

Batch Profile by Industry:



IT & ITES	26%
Banking	24%
Insurance	14%
FinTech	12%
Manufacturing	6%
Others	18%

Batch Profile by Experience Level:



15+ years	20%
8-15 years	26%
4-7 years	12%
1-3 years	22%
Freshers	20%

Participants from reputed organizations: TATA Consultancy Services | Indian Overseas Bank | Navi FinTech | Net2Source Inc | Vedanta Aluminium | BSR & Co. LLP & more



CAREER PROSPECTS

Financial analytics skills are used in banking, fintech, consulting, corporate finance, risk management, and investment firms — making it a versatile and future-ready career path iPleaders

Popular Career Paths

- Equity Analyst ■ Buy-Side Analyst ■ Sell-Side Analyst
- Technical Analyst ■ Financial Analyst ■ Credit Analyst
- Fund Manager ■ Portfolio Manager ■ Risk Manager
- Investment Banker ■ Investment Adviser ■ Financial Planner

& more



ADMISSIONS 2026

ELIGIBILITY

Graduates from any discipline from a recognized university, with more than 50% marks or equivalent.

Graduation students in their final year are also eligible.

TIMELINE

Last Date to Apply
JAN 31, 2026

Online Interviews
FEB 2026

Programme Starts
MAR 2026

ADMISSION PROCESS

1

Apply Online

(Link at the bottom of the page)
and pay the Application Fee

2

Attend Interview


Online interviews that can be attended
from the comfort of your home

3

Enroll for the Programme

Upload necessary documents
Pay fees and get onboard

Admission Counselor

 Madhur | Ajay

 8591262151 | 8368448803

[**APPLY NOW**](#) 

Click on the link (OR)
Scan the QR Code



PROGRAMME FEES

₹ **1,50,000**

plus 18% GST



Payment Options

Option	Fee Payable
Single Payment	Rs. 1,50,000 + 18% GST
Two Instalments	Rs. 80,000 x 2 + 18% GST
Three Instalments	Rs. 57,000 x 3 + 18% GST

Application Fees: Rs. 1000 + 18% GST

The Payment Details will be mailed upon filling the Application Form





Asia's oldest technical institution founded in 1794 and the oldest one established outside Europe.

Anna University was established on 4th September, 1978 as a unitary type of University. This University was named after Late Dr. C.N. Annadurai, former Chief Minister of Tamil Nadu. It offers higher education in Engineering, Technology, Architecture and Applied Sciences relevant to the current and projected needs of the society. Besides promoting research and disseminating knowledge gained therefrom, it fosters cooperation between the academic and industrial communities.

The University was formed by integrating four technical institutions, viz., College of Engineering Guindy, Alagappa College of Technology, Madras Institute of Technology and School of Architecture and Planning.

Anna University has been ranked No. 2 in the 'State Public Universities Category' by NIRF 2025. As per QS World University Rankings 2025, Anna University has been ranked No. 383 globally and No. 10 among Indian Institutions.



NSE Academy is a wholly-owned subsidiary of National Stock Exchange

NSE Academy enables the next generation of BFSI and FinTech professionals to acquire industry-aligned skills – through capacity-building programs and certification courses, powered by an online examination and certification system. The courses are well-researched and carefully crafted with inputs from industry professionals. NSE Academy works closely with reputed universities and institutions across India in building a competent workforce for the future of BFSI and FinTech. NSE Academy also promotes financial education as an essential life skill among youngsters – a contribution towards financial inclusion and wellbeing.

100+
Certification
Modules

40+
Skill
Areas

8.5 mn
Certified

DISCLAIMER

- The information in this document is intended for use only by Anna University and NSE Academy Ltd. It may not be reproduced in whole, or in part, nor may any of the information contained therein be disclosed without the prior consent of the authorized representatives of Anna University and NSE Academy Ltd. except within the organization.
- Any form of reproduction, dissemination, copying, disclosure, modification, distribution, and or publication of this material is strictly prohibited.
- The programme curriculum, list of activities and projects mentioned herein is indicative and may be modified by Anna University and NSE Academy Ltd. in the best interest of the participants.
- The tools / platforms / applications / software demonstrated in this programme are third-party platforms used solely for educational purposes. Anna University or NSE Academy do not own, develop, or control these technologies and are not responsible for accuracy, performance, security, or continued availability of these tools / platforms / applications / software. Any use of such technologies by participants beyond the programme is at their own discretion.
- Anna University and NSE Academy reserves the right to modify or reschedule session dates and timings at their discretion in the event of unforeseen circumstances or exigencies.
- The programme is for educational purpose only. It is further clarified that Anna University or NSE Academy does not, in any manner whatsoever, assure, warrant, guarantee, or promise any profits/gains from the market. Market risk is always applicable.
- It is clarified that Anna University or NSE Academy does not, in any manner whatsoever, assure, warrant, guarantee, or promise any job/ placement/ advancement to any Participant.
- Under no circumstances, Anna University, NSE Academy, and its partners shall be held responsible/ liable for failure on the part of the Participants to pass / successfully clear the interview process or the requirements to successfully secure a job.
- The fee paid is non-transferable and non-refundable.
- For more information, please visit www.annauniv.edu and www.nseindia.com



APPLY NOW



Last Date to Apply
JAN 31, 2026



Click on the link (OR)
Scan the QR Code



Madhur | Ajay



8591262151 | 8368448803

NSE Academy

Ashok Silk Mills Compound,
202, L.B.S. Marg, Ghatkopar West,
Mumbai, Maharashtra – 400086

Anna University

Sardar Patel Road, Guindy,
Chennai, Tamil Nadu - 600025